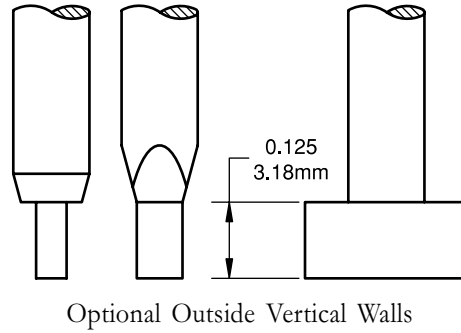
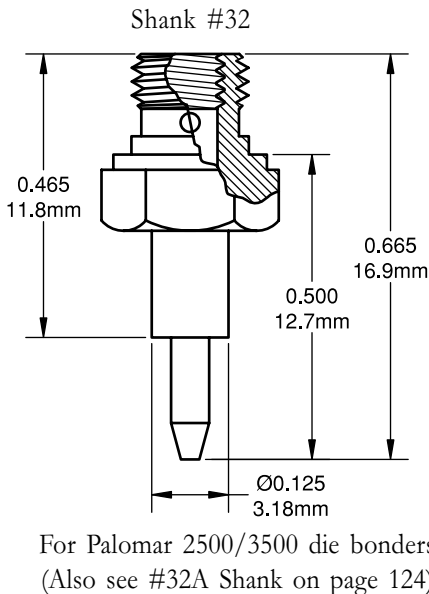
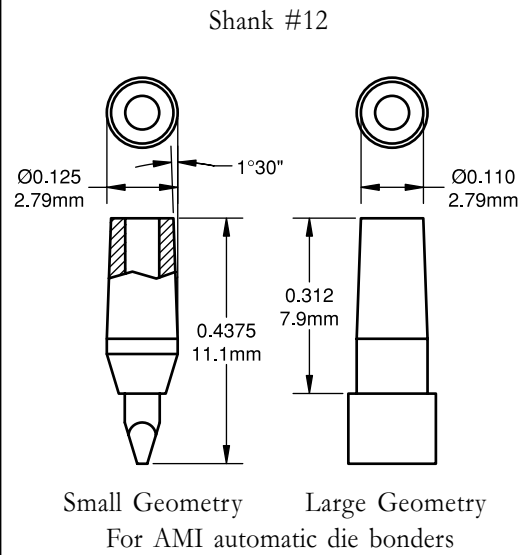
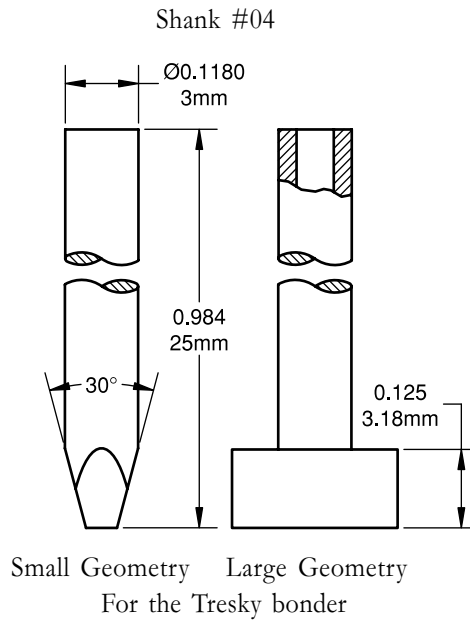
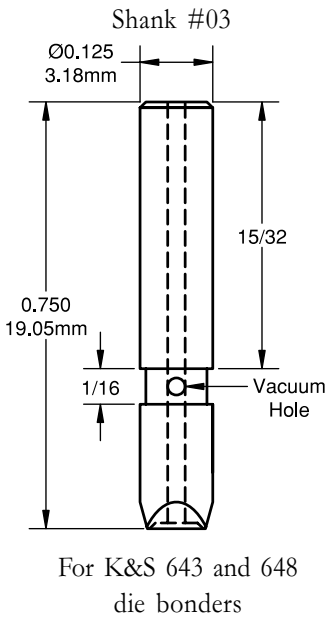


| SHANK NUMBER | DIAMETER D in./mm |
|--------------|-------------------|
| 01           | .0625/1.58        |
| 02           | .125/3.18         |

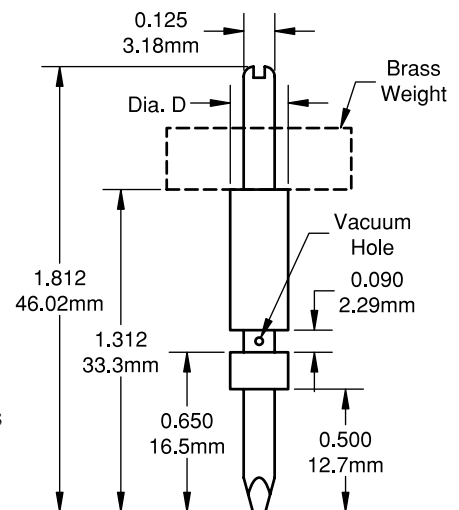


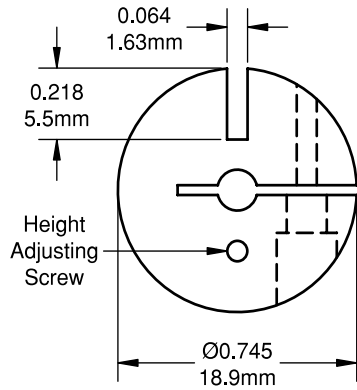
| MACHINE        | SHANK NUMBER | LENGTH in./mm |
|----------------|--------------|---------------|
| Esec           | 01           | .315/8.00     |
| West Bond 7300 | 01           | Specify       |
| K&S 642        | 02           | .750/19.05    |
| Mech EI 703    | 02           | .750/19.05    |
| Mullen 8-140   | 02           | .750/19.05    |
| SEC 4000       | 02           | 1.00/25.4     |



| SHANK NUMBER | DIAMETER D in./mm |
|--------------|-------------------|
| 21           | .125/3.18         |
| 22           | .187/4.75         |
| 23           | .234/5.94         |
| 24           | .312/7.92         |

For Mullen/Unitek die bonders  
 Model 8-157 heated

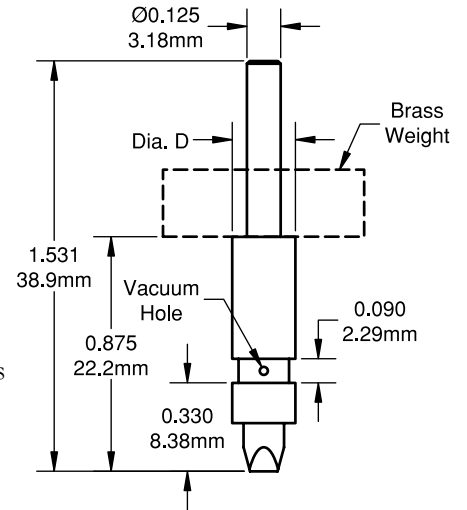




Weights used with collet shanks #21 through #29, #62, and #63 (ordered separate)

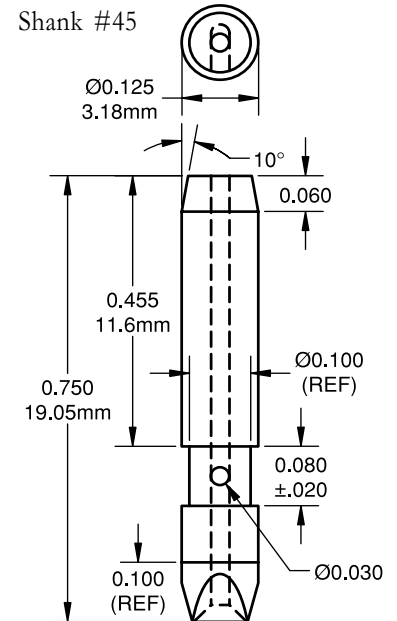
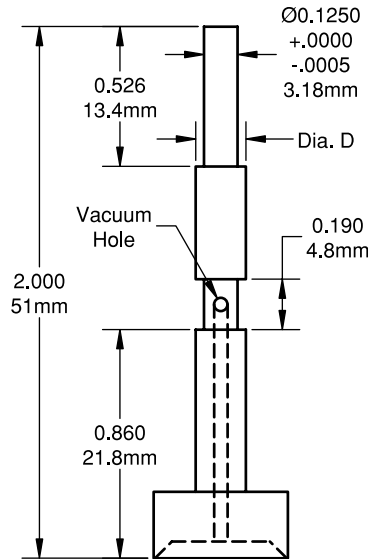
| SHANK NUMBER | DIAMETER D in./mm |
|--------------|-------------------|
| 25           | .125/3.18         |
| 26           | .187/4.75         |
| 27           | .234/5.94         |
| 28           | .312/7.92         |
| 63           | .500/12.7         |

For Mullen/Unitek die bonders Model 8-140 heated



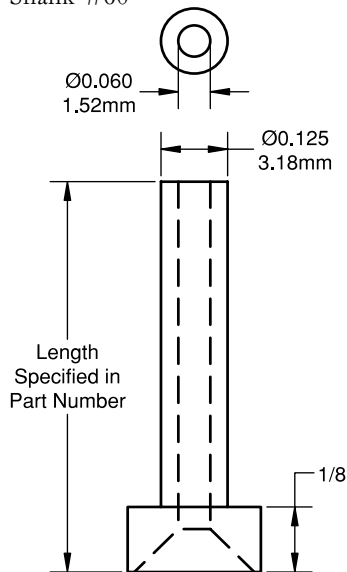
| SHANK NUMBER | DIAMETER D in./mm |
|--------------|-------------------|
| 29           | .125/3.18         |
| 62           | .312/7.92         |

For Mullen/Unitek die bonders Model 8-140 heated



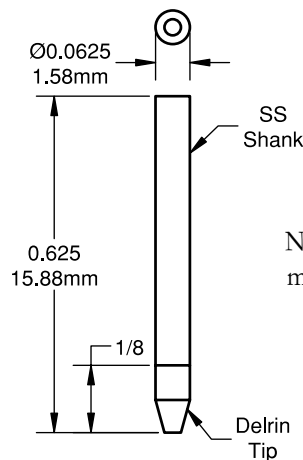
Combination for Mech El 703 and K&S 643 die bonders

Shank #60



For the K&S 6300 bonder

Shank #61



Note: For other lengths or materials, use 3901C shank