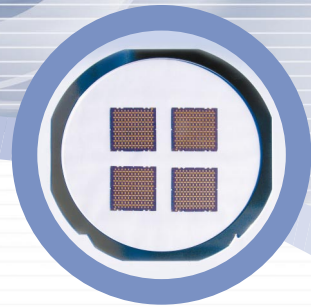
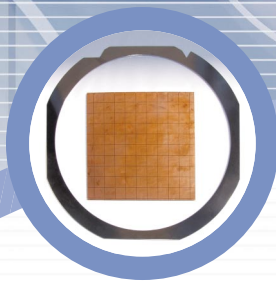
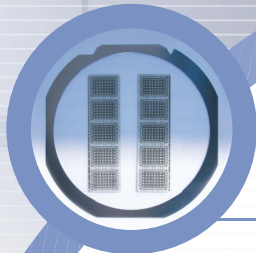


# WM-966



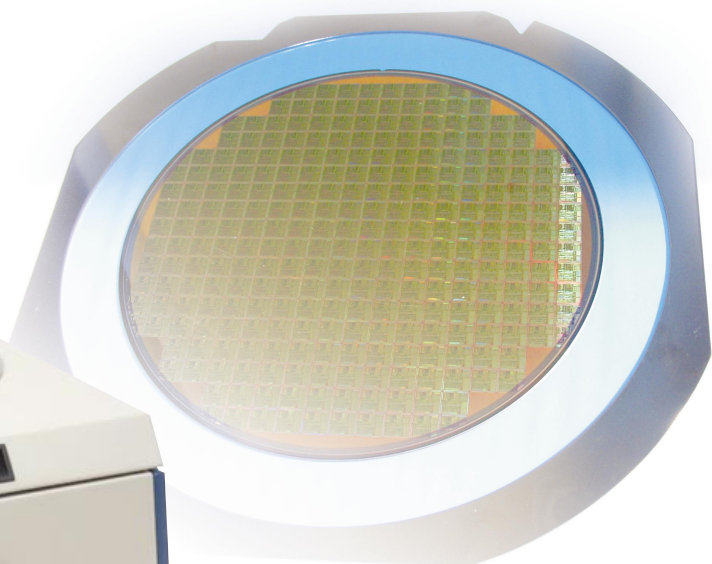
## Workpiece Mounting Unit - Model 966

The ADT Workpiece Mounting Unit Model 966 enables mounting of wafers/substrates to frames, using various kinds of tape.

With smart, state-of-art features such as: a built-in, automatic reeling and removal of UV tape protective backing, ESD (Electrostatic Discharge) protection and many other advanced customization and control options, the system exhibits the highest level of design and performance available.

### System Highlights:

- Uniform mounting and tensioning without forming air bubbles
- Built-in reeling and removal of UV tape backing
- Compatibility with all film frames
- Programmable temperature regulation
- A circular blade is used to cut the leftover tape
- Optional, ESD protection
- Optional, non-contact mounting



UNIFORM MOUNTING AND TENSIONING

**ADT** = **Dicing**  
Advanced Dicing Technologies

