

LA-309 General Purpose Laboratory Furnace

The RTC Model LA-309 Infrared Furnace is a small, general purpose furnace that has a number of options available to optimize its operation to meet the user's needs.

Conveyor driven for continuous operation, the furnace features a 3-zone 500°C near-infrared heating chamber (to 1000°C as an option).

Clean air compatible to Class 1000, the LA-309 can process substrates, wafers, PCBs, metal, ceramic, or glass parts for:

- Hybrid Thick Film Firing
- Package Sealing
- Epoxy Die Attach
- Polymer Curing
- Reflow Soldering

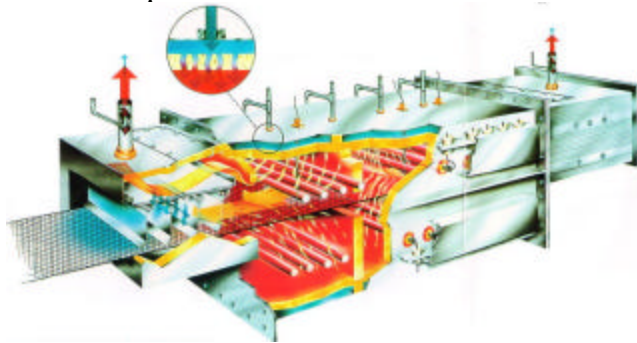


LA-309 furnace: 30 inches of heat, 9 inch wide belt.

- Frit (Glass) Sealing
- Brazing
- Annealing
- Tempering
- Metal Sintering

Technology Benefits

Temperature is maintained with control thermocouples above the belt in each zone to quickly sense incoming cold mass. Quartz lamps inside the chamber instantaneously adjust their output to achieve tight temperature control. Each load sees the same temperature. No “dummy load” is required.

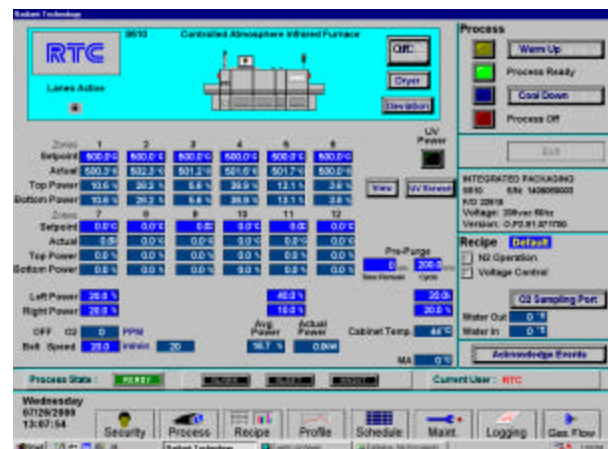


RTC's patented chambers deliver precise temperature profiles. Process atmospheres are ultra-clean and uniform.

Process atmosphere is controlled much like a clean room. Pressurized gas is pushed through a porous refractory as it enters the heating

chamber. A pre-heated, laminar flow process gas means a uniform, stable atmosphere. The process window becomes broad and repeatable.

Fully featured and compliant with industry standards, the LA-309 has the latest manufacturing equipment technology.



RTC's graphical user interface displays all furnace parameters in a simple, user-friendly format.



LA-309 General Purpose Laboratory Furnace

SPECIFICATIONS	LA-309
Parts Clearance (in, cm)	0.75-4, 1.9-10.2 (customer must specify clearance height)
Belt Width (in, cm)	9.0, 23
Conveyor Speed (ipm, cm/min)	2-20, 5-51
Load Station (in, cm)	15, 38
Unload Station (in, cm)	15, 38
Entrance Baffle (in, cm)	15, 38
Heated Length (in, cm)	30, 76
Number of Controlled Heated Zones	3, 4 optional
Heat Up Time (minutes)	15
Maximum Operating Temperature	500°C, 1000°C optional
Transition Tunnel (in, cm)	15, 38
Cooling Length (in, cm)	30, 76
Atmosphere Flow Rate: CDA, N ₂ (scfh, m ³ /hr)	600, 16.8 typical
Electrical	208V-480V, 3 phase, 50/60Hz
Process Exhaust, Venturi Assist	2
Power (KW) Peak, Typical	26, 15
Water Cooling Option (gpm-psi, lpm-kpa)	5-50, 19-350
Overall Length (in, cm)	123, 312
Overall Width (in, cm)	43, 109
Overall Height (in, cm)	68, 172
Weight Net (lbs, Kg)	1600, 720
Weight Crated for Air/Ocean Shipment (lbs, Kg)	2400, 1100

Options

- **Air Line Filter/Regulator**
- **4th Heated Controlled Zone**
- **Hermetically Sealed Chamber**
- **High Temp Operation (1000°C)**
- **Nichrome (80/20 alloy) Belt**
- **Lamp Element Monitor**
- **On-Screen Profiling System**
- **Over Temperature Shutdown**
- **Process Ready/Alarm Light Tower**
- **Ultrasonic Belt Cleaner with Dryer**
- **Uninterruptible Power Supply**
- **Cold Wall Water Cooling**
- **Forced Air Cooling**
- **Air Purification System**

Please visit our web site or call your local RTC representative to discuss your specific requirements

BITA ELEKTRONIK SVENSKA AB
POB 3434
SE-1368 STOCKHOLM; Sweden
Ph. + 46 (8) 319000, Ex. +46 (8) 326064
e-mail: info@bita.se, www.bita.se

RTC radiant technology corporation



RTC is committed to a process of continuous improvement which can cause changes to product specifications and/or price, and reserves the right to make such changes without liability or prior notice. Radiant Technology Corporation © 2005