

# Metal Blade Probes

## METAL BLADE PROBES

Accuprobe offers a wide selection of metal blade probes for semiconductor, hybrid circuit and laser trim applications. Blade probes are compatible with most probe card assembly machines and provide a stable and repairable solution for device test. Profiles to suit both hybrid and semiconductor applications are available in many standard working depths.

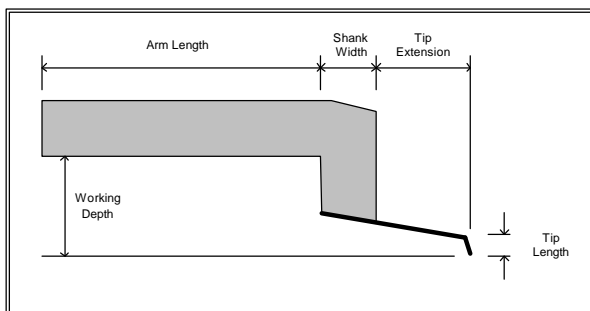
A unique feature of a number of Accuprobe metal blades is that the longer varieties may be shortened during assembly to more flexibly probe diverse device pad arrangements. Customers using the M or L versions of these metal blades only need to stock one item in inventory to meet short and long reach applications.

Accuprobe's metal blades can accommodate a diverse set of needles from 6 to 15 mils in diameter. Standard as well as custom tip extensions, tip lengths, bend angles and tip shapes may be specified.

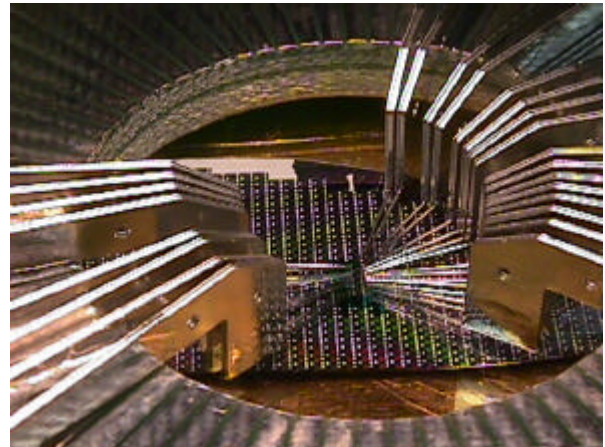
## BLADE SELECTION AND ORDERING

Select your metal blade style from the table that follows. A typical model number is BAMW3AF meaning:

- BA Small blade 144 mil working depth
- M Medium 552 mil arm length
- W Tungsten 10 mil needle
- 3A 1.5 mil tip diameter, 8 mil tip drop
- F Flat tip shape



Blade Geometry



<b>BA &amp; H</b>	<p>144 MILS TYP (3.658 mm)</p>
<b>BB</b>	<p>244 MILS TYP (6.198 mm)</p>
<b>BC</b>	<p>317 MILS TYP (8.052 mm)</p>
<b>BD</b>	<p>317 MILS TYP (8.052 mm)</p>
<b>BE</b>	<p>.472 MILS TYP (12 mm)</p>
<b>BF</b>	<p>1.080 MILS TYP (27.43 mm)</p>
<b>BG</b>	<p>244 MILS TYP (6.198 mm)</p>

Probing the World  
of Microelectronics

# Metal Blade Probes

Profile	Size	Working Depth	Blade Thickness	Arm Length	Shank Width	Tip Extension	Tip Length
BA	S	144	15	378	152	200	8
BA	M	144	15	552	152	200	8
BA	L	144	15	1000	152	200	8
BB	S	244	20	452	180	250	15
BB	M	244	20	1710	180	250	15
BB	L	244	20	2320	180	250	15
BC	S	317	20	452	180	250	8
BC	M	317	20	1370	180	250	8
BC	L	317	20	2320	180	250	8
BD	L	317	32	2125	500	250	8
BE	L	472	32	2335	165	250	60
BF	L	1080	32	2310	190	250	60
BG	S	244	20	452	180	250	8
BG	M	244	20	1710	180	250	8
BG	L	244	20	2320	180	250	8
BH	S	144	15	347	143	230	15

\*all sizes in mils

## Blade Selection Table

Type	Profile	Body Length				Needle Material Diameter		Tip Diameter "A"		Tip Drop "B"		Tip Shape	
B   Metal blade	A	S	M	L	A	Tungsten	.006" (.152mm)	1*	.0005" (.0127mm)	A	.008" (.2032mm)	F	Flat
	B	S	M	L	W	Tungsten	.010" (.254mm)	2	.001" (.0254mm)	B	.015" (.381mm)	R	Radius
	C	S	M	L	WR	Tungsten Rh	.010" (.254mm)	3	.0015" (.0381mm)	C	.030" (.762mm)		
	D			L	D	BeCu	.010" (.254mm)	4	.002" (.0508mm)	D	.060" (1.524mm)		
	E			L	HD	Hard BeCu	.010" (.254mm)	5	.0025" (.0635mm)				
	F			L	P	Palladium	.010" (.254mm)	6	.0035" (.0889mm)				
	G	S	M	L	E	Tungsten	.012" (.3048mm)	7	.005" (.127mm)				
	H	S			ER	Tungsten Rh	.012" (.3048mm)	8	.010" (.254mm)				
C   Ceramic blade	Ceramic types only					C	BeCu	.012" (.3048mm)	9	.012" (.3048mm)			
	1	S	M		HC	Hard BeCu	.012" (.3048mm)	10	.015" (.381mm)				
	2	S	M		T	Tungsten	.015" (.381mm)						
	3	S	M		TR	Tungsten Rh	.015" (.381mm)						
	4	S	M		B	BeCu	.015" (.381mm)						
	5	S	M		HB	Hard BeCu	.015" (.381mm)						
	Z1	S	M										
	Z2	S	M										

**Note: Other tip drops are available up to 220 mils (5.6 mm)**

**Notes:**  
 1 BeCu not available in .0005" tip.  
 2 Not all combinations of tip material, Tip Drop "B", and tip diameter "A", are possible.

BITA ELEKTRONIK SVENSKA AB  
 POB 3434  
 SE-10368 STOCKHOLM, Sweden  
 Ph. +46 (8) 319000  
 Fx. +46 (8) 326064  
 info@bita.se - www.bita.se



©2002 Accuprobe, Inc. Specifications may change without notice.  
 Accuprobe and the Accuprobe logo are trademarks of Accuprobe, Inc.